

HONING PASTE KIT

- Gives sharpened cutting edges a highly polished finish.
- Paste and leather strop included.
- Paste weight 100gm.



HONING PASTE KIT REF. DWS/HP/KIT

Thank you for purchasing this Trend product, which should give lasting performance if used in accordance with these instructions.

The following symbols are used throughout these instructions.



Denotes risk of personal injury, loss of life or damage to the tool in case of non-observance of the instructions.

INTENDED USE

This accessory is intended to be used with chisels, carving tools plane irons and similar bladed hand tools that have had their cutting edges sharpened, to give a highly polished cutting edge.

SAFETY



All cutting edges are very sharp and care must be taken to prevent injury. Never sharpen blades towards the hand or body.

The paste is non-toxic but it may cause eye or skin irritation. Wear gloves. Paste is a mix of aluminium oxide, fatty acid and petroleum wax/oil.



Avoid contact with skin.
Avoid contact with eyes.

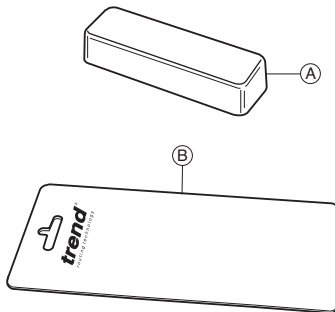
Material Safety Data Sheet available upon request or as download from www.trend-UK.com

ITEMS REQUIRED

- Flat bench.
- Sharpened chisel/plane iron.
- Gloves.

ITEMS ENCLOSED & DESCRIPTION OF PARTS

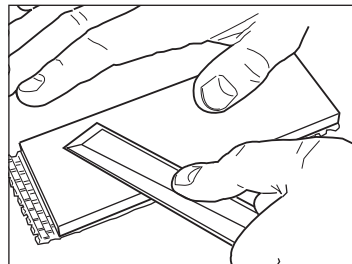
- A. Honing paste 100 gm **x1**
- B. Leather strop **x1**



OPERATION

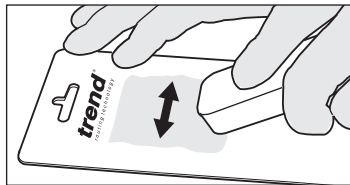


1. Once you have attained a keen edge on your chisel, plane blade, carving tool etc. Back off the tool on the stone. We recommend using a precision flat diamond stone, either the 7" double sided or the 8" single sided fine.

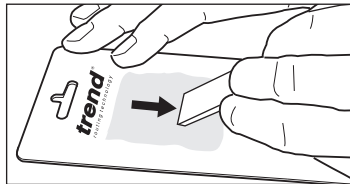


2. Lay leather strop out flat with the rough side (Trend logo side) uppermost.

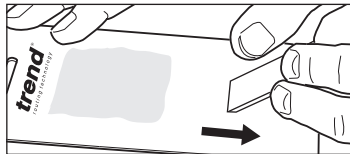
3. Apply some honing (polishing) paste to top half of the leather strop. Wear gloves.



4. Rub the bevel edge sided of the blade into the paste a few times.

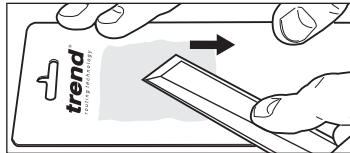


5. Polish off the surface of the tool on the clean half of the leather strop.



6. Repeat until you have attained your desired polished edge – this should take a matter of a couple of minutes and not hours. You may need to reapply paste.

7. Then repeat the method on the flat side of the blade.



8. Wash hands after use.

SPARE PARTS

Only use original Trend spare parts.

Item	Qty	Desc.	Ref. (1 off)
A	1	Honing Paste 100gm	DWS/HP/100
B	1	Leather Strop	DWS/HP/LS

MAINTENANCE

The accessory has been designed to operate over a long period of time, with the minimum amount of maintenance.

Cleaning

- Your accessory requires no cleaning.

Lubrication

- Your accessory requires no additional lubrication.

Storage

- Return to packaging after use.
- Store paste at room temperature.
- Keep paste out of sun and away from heat sources as product may melt.

ENVIRONMENTAL PROTECTION

Recycle raw materials instead of disposing as waste.

Packaging should be sorted for environmental-friendly recycling.

The product and its accessories at the end of its life should be sorted for environmental-friendly recycling.

GUARANTEE

All Trend products guaranteed against any defects in either workmanship or material, except products that have been damaged due to improper use or maintenance.

Our policy of continuous improvements mean that specifications may change without notice. Trend Machinery & Cutting Tools cannot be liable for any material rendered unusable or for any form of consequential loss.



RECYCLABLE

© Trend Machinery & Cutting Tools Ltd. 2009 E&OE
 ® All trademarks acknowledged

Trend Machinery & Cutting Tools Ltd.
 Odhams Trading Estate St Albans Road
 Watford WD24 7TR England
 Tel: 0044(0)1923 249911
 technical@trendm.co.uk
 www.trend-uk.com